

A low-angle photograph of a construction site. Several tall tower cranes are visible against a clear blue sky. In the foreground, the steel framework of a building under construction is visible, featuring a prominent horizontal beam with a corrugated metal floor. The overall scene is one of active construction.

NXSE

PHILIPPINES

PRODUCT PROFILE

0921-341-5401

sales@nxsphil.com.ph

B14 L4 Unit 2 Varisha Building, Silcas Village Brgy. San Francisco, Binan, Laguna

Introduction

Established in 2018, NXS Philippines Inc. is a company built to meet the construction and industrial needs of all types of clients in different fields, including but not limited to: pharmaceutical, cement, steel, semi-conductor, food and beverages, petrochemicals, water treatment.

NXS Philippines Inc. is a domestic corporation, primarily engaged in buying and selling, on wholesale basis, import, and other deals with specialized range of construction and industrial and automation products, and its appurtenances thereto.

We meet the standards of our nationwide customers in the Philippines by providing them quality industrial and construction products with competitive pricing. We do this by strategically forming alliances with principals from both local and abroad suppliers, therefore emphasizing our credibility to service our clients by meeting their quality standards and specific needs.



Customer References

Project Reference

**11 units Omega Pump
- HVAC Application -
PBCom Tower**



**4 units Omega Pump
- HVAC Application -
Ayala 30th Mall**



**Firefighting & Plumbing -
Shang Aurelia Residences BGC**





wilo

LOCATION
Makati, Philippines

PROJECT
Glorietta Mall

ZONE
Commercial Building

APPLICATION
HVAC

INSTALLED PRODUCTS

- 4 X ES250-200/315/75KW
- 4 X ES250-200/315/110KW
- 3 X ES250-200/315/132KW
- 1 X PZU/ZC6-HELIX V2206/4H-1

NOTE:
For reference use only
DO NOT PUBLISH.



wilo

LOCATION
Bulacan, Philippines

PROJECT
The Philippine Arena

ZONE
Recreation/Stadium

APPLICATION
HVAC
Water Supply
Drainage & Sewage

INSTALLED PRODUCTS

- 12 X SCPC200/360HA/90KW
- 12 X SCPC250/330HA/75KW
- 2 X PZU/ZC3-HELIX/V3603/2/3H1
- 4 X PZU/ZC2-HELIX/V1602/2/3H1
- 26 X PDN-1400M & PDN-2200I

NOTE:
For reference use only
DO NOT PUBLISH.



wilo

LOCATION
Alabang, Philippines

PROJECT
Northgate DCS

ZONE
Commercial Building

APPLICATION
Water
Distribution/boosting
Make - up water
Drainage

INSTALLED PRODUCTS

- 1 X KF+53H225/25
- (PZEU53H225/2-14 X
- 1 X MHIKE D-405MA
- 4 X PDV-3700+AD-65

NOTE:
For reference use only
DO NOT PUBLISH.



wilo

LOCATION
Makati, Philippines

PROJECT
ATG Diamond Project

ZONE
High Rise Building

APPLICATION
Water
distribution/boosting
Waste water
collection/transport

INSTALLED PRODUCTS

- 1 X COR-2HELIX EVO V 2003
- 1 X COR-2HELIX EVO V 1502
- 1 X COR-3HELIX EVO V 1508
- 1X COR-2HELIX EVO V 1502
- 1X COR-3HELIX EVO V 2005
- 4 X SWP 100/26-75/4-C-3
- 2 X SWP 80/43-75-C-3
- 2 X SWP 80/35-55-C-3
- 3 X HELIX EVO V 3202/2-1
- 3 X HELIX EVO V 3209-1
- 2 X HELIX EVO V 4505/1-1
- 12 X PDU15KHIF

NOTE:
For reference use only
DO NOT PUBLISH.

Content

A. FIRE PROTECTION

- A. Pumps**
- B. Seamless Steel Pipes**
- C. Valves**
- D. Sprinkler Head**
- E. Grooved & Threaded Fittings**

B. HVAC COMPONENTS

- i. Pumps**
- ii. NEW* Air Conditioning Piping System**
- iii. Seamless Steel Pipes**
- iv. Valves**
- v. Grooved & Threaded Fittings**

C. PLUMBING SYSTEM

- i. Pumps**
- ii. PPR System (POLIEURO)**
- iii. PVC System (ISO Standard) (RIIFO)**
- iv. HDPE System (ISO Standard) (RIIFO)**
- v. Valves**
- vi. GI & CI Pipes**

D. ELECTRICAL COMPONENTS

- i. Diesel Generator Sets**
- ii. Variable Frequency Drive (VFD) Controller**
- iii. Uninterruptible Power Supply (UPS)**
- iv. Harmonic Filter**
- v. Battery Monitoring System**

A. FIRE PROTECTION



FIRE PUMPS



UL/FM Approved Brands



German
(Since 1887)



German
(Since 1872)



China



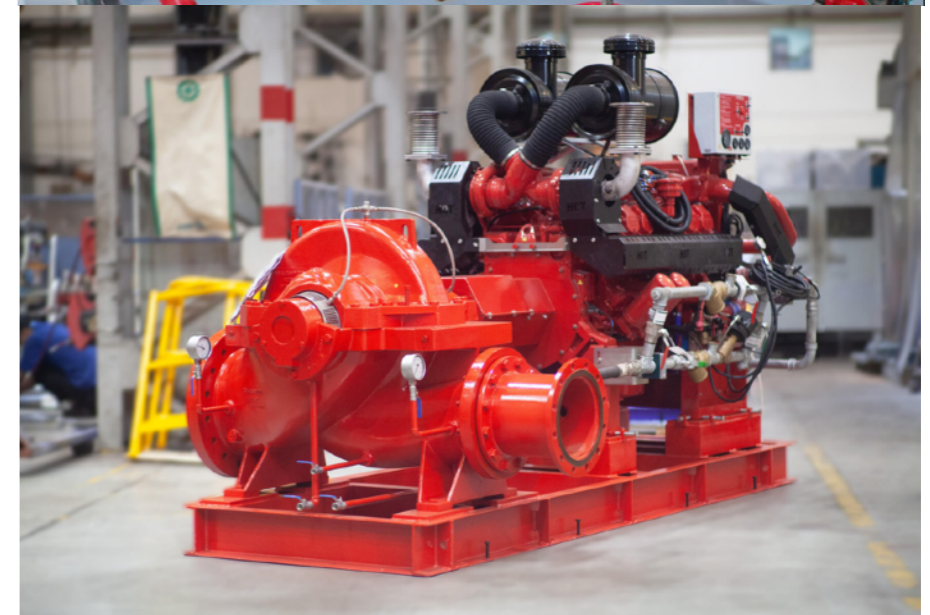
UAE

Non-UL/FM Brand



Taiwan (Since 1969)

EVERGUSH
SINCE 1969



SEAMLESS STEEL PIPES

NXSTEEL

SINGAPOREAN STEEL FACTORY

STEEL PIPES FOR FIRE
PROTECTION AND HVAC

Sch 10 - ASTM A795 Standard - Black & Galvanized Welded and Seamless Steel Pipe for Fire Protection



TABLE 1 Dimensions, Weights, and Test Pressure For Light-Weight Fire Protection Pipe—Schedule 10^A

NPS Designator	DN Designator	Outside Diameter		Nominal Wall Thickness		Weight Plain End		Test Pressure			
		in.	mm	in.	mm	lb/ft	kg/m	Furnace-Welded		Seamless and Electric-Resistance-Welded	
								psi	kPa	psi	kPa
¾	20	1.050	[26.7]	0.083	[2.11]	0.86	[1.28]	500	[3400]	700	[4800]
1	25	1.315	[33.4]	0.109	[2.77]	1.41	[2.09]	500	[3400]	700	[4800]
1¼	32	1.660	[42.2]	0.109	[2.77]	1.81	[2.69]	500	[3400]	1000	[6900]
1½	40	1.900	[48.3]	0.109	[2.77]	2.09	[3.11]	500	[3400]	1000	[6900]
2	50	2.375	[60.3]	0.109	[2.77]	2.64	[3.93]	500	[3400]	1000	[6900]
2½	65	2.875	[73.0]	0.120	[3.05]	3.53	[5.26]	500	[3400]	1000	[6900]
3	80	3.500	[88.9]	0.120	[3.05]	4.34	[6.46]	500	[3400]	1000	[6900]
3½	90	4.000	[101.6]	0.120	[3.05]	4.98	[7.41]	500	[3400]	1200	[8300]
4	100	4.500	[114.3]	0.120	[3.05]	5.62	[8.37]	500	[3400]	1200	[8300]
5	125	5.563	[141.3]	0.134	[3.40]	7.78	[11.58]	^B	^B	1200	[8300]
6	150	6.625	[168.3]	0.134	[3.40]	9.30	[13.85]	^B	^B	1000	[6900]
8	200	8.625	[219.1]	0.188 ^C	[4.78]	16.96	[25.26]	^B	^B	800	[5500]
10	250	10.750	[273.1]	0.188 ^C	[4.78]	21.23	[31.62]	^B	^B	700	[4800]

^A Schedule 10 corresponds to Schedule 10S as listed in ANSI B36.19 for NPS ¾ through 6 [DN 20 through 150] only.

^B Furnace-welded pipe is not made in sizes larger than NPS 4 [DN 100].

^C Not Schedule 10.

Sch 40, 80 & Above - ASTM A53 Standard

Nominal Pipe Size (NPS)		Outside Diameter	Nominal Wall Thickness								
DN	INCH		SCH40	SCH60	SCH80	SCH100	SCH120	SCH140	SCH160	XS	XXS
		MM	MM	MM	MM	MM	MM	MM	MM	MM	MM
15	1/2	21.3	2.77	-	3.73	-	-	-	4.78	3.73	7.47
20	3/4	26.7	2.87	-	3.91	-	-	-	5.56	3.91	7.82
25	1	33.4	3.38	-	4.55	-	-	-	6.35	4.55	9.09
32	1 1/4	42.2	3.56	-	4.85	-	-	-	6.35	4.85	9.7
40	1 1/2	48.3	3.68	-	5.05	-	-	-	7.14	5.08	10.15
50	2	60.3	3.91	-	5.54	-	-	-	8.74	5.54	11.07
65	2 1/2	73	5.16	-	7.01	-	-	-	9.53	7.01	14.02
80	3	88.9	5.49	-	7.62	-	-	-	11.13	7.52	15.24
90	3 1/2	101.6	5.74	-	8.08	-	-	-	-	8.08	-
100	4	114.3	6.02	-	8.58	-	11.13	-	13.49	8.56	17.12
125	5	141.3	6.55	-	9.53	-	12.7	-	15.88	9.53	18.05
150	6	168.3	7.11	-	10.97	-	14.27	-	18.26	10.97	21.95
200	8	219.1	8.18	10.31	12.7	15.09	18.26	20.62	23.01	12.7	22.23
250	10	273.1	9.27	12.7	15.09	18.26	21.44	25.4	28.58	12.7	25.4
300	12	323.9	10.31	14.27	17.48	21.44	25.4	28.58	33.32	12.7	25.4
350	14	355.5	11.13	15.09	19.05	23.83	27.79	31.75	35.71	12.7	-
400	16	406.4	12.7	16.66	21.44	26.19	30.96	36.53	40.49	12.7	-
450	18	457.2	14.27	19.05	23.83	29.36	34.93	39.67	45.24	12.7	-
500	20	508	15.09	20.62	26.19	32.54	38.1	44.45	50.01	12.7	-
550	22	553.8	-	22.23	28.58	34.93	41.28	47.63	53.98	12.7	-
600	24	609.6	17.48	24.61	30.96	38.89	46.02	52.37	59.54	12.7	-



FIRE PROTECTION VALVES, HOSE, CABINET, & ACCESSORIES



Brands



LEIDE® WEFLO



jinton 金通

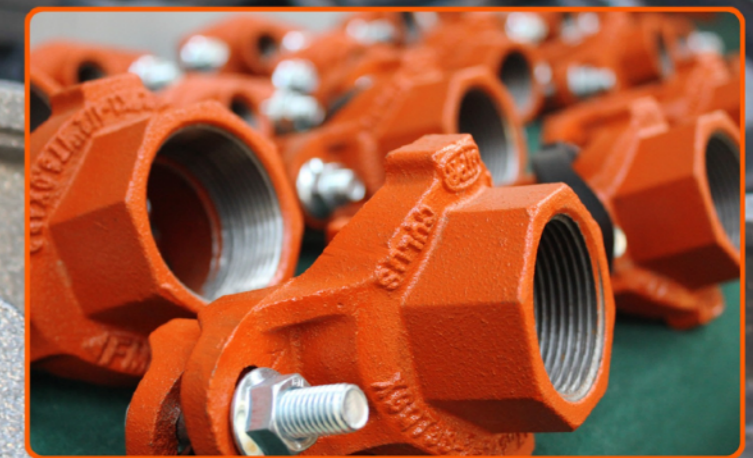
HS APC DY WPT



GROOVED & THREADED FITTINGS



Brands



SPRINKLER HEADS



tyco **victaulic** **TUNA**[®]

A photograph of a mechanical room, likely a ceiling plenum or a dedicated HVAC space. The image shows a complex network of HVAC components. On the left, there are large, flexible, silver-colored ducts. In the center, there are several vertical pipes, some wrapped in insulation. On the right, a large, rectangular, ceiling-mounted HVAC unit is visible, with a vent grille. The ceiling is covered in a grid of silver insulation. The overall scene is industrial and technical.

B. HVAC COMPONENTS

HVAC PUMPS



German
(Since 1887)



German
(Since 1872)



EVERGUSH®
SINCE 1969

Taiwan
(Since 1969)



CENTRAL AIR-CONDITIONING SYSTEM

Water-cooled & Air-cooled Water Chiller

- a) Screw Chillers
- b) Centrifugal Chillers
- c) Magnetic Bearing Chillers



Products Distributed:

Ventilation Grilles

Explosion-proof Fans

EC Fans

Fan Coil Units

Heat Pump Units

Galvanized Air Ducts

Dampers

Centrifugal Fans

Axial Flow Fans

Water Tanks

Fireproof Air Ducts

Heat Evaporators

Actuators & Accessories

NXSTEEL

Established in 2018, NXS Philippines Inc. is a company built to meet the construction and industrial needs of all clients in different sectors, including but not limited to: pharmaceutical, cement, steel, semi-conductor, food and beverages, petrochemicals, water treatment.

NXS Philippines Inc. is a domestic corporation, primarily engaged in buying and selling, on wholesale basis, import, and other deals with specialized range of construction and industrial and automation products.

We meet the standards of our nationwide customers in the Philippines by providing them high-quality industrial and construction products with competitive pricing. We do this by strategically forming alliances with principals from both local and abroad suppliers, therefore emphasizing our credibility to service our clients by meeting their quality standards and specific needs.

HVAC & Ventilation Equipment

CONTACT US

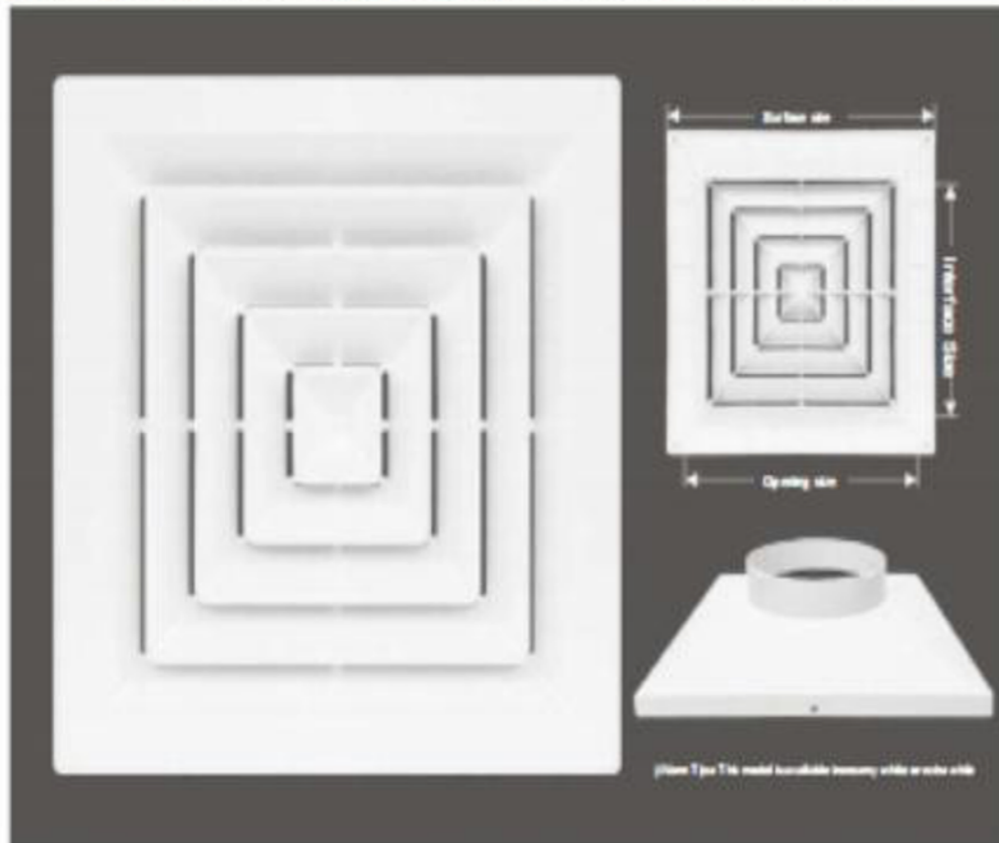
0921-341-5401

sales@nxspil.com.ph

B14 L4 Unit 2 Varisha Building, Silcas Village Brgy. San Francisco, Binan, Laguna

Square Diffuser Series

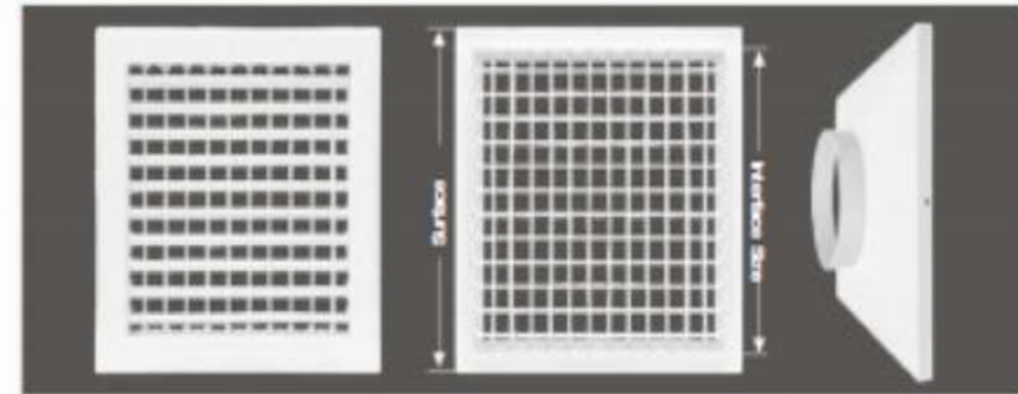
The square diffuser is made of brand new ABS material, with smooth and delicate surface, anticorrosion, no yellowing and deformation, environmental protection and odorless. Features: It adopts a U-shaped design, and the air flow is even and soft. It is one of the most popular products in the market.



Model	Name	Surface size	Opening size	Spune height	Net weight (kg)
107E	Brand of small size diffuser	380*380	300*300	18.0*18.0	100*1.00
107H-002	Brand of small size diffuser	380*380	340*340	18.0*18.0	100*1.00
107C-003	Brand of small size diffuser	380*380	380*380	230*230	100*1000.00
107H-002	Brand of small size diffuser	400*400	340*340	280*280	100*1000.00
107H-002	Brand of small size diffuser	400*400	380*380	330*330	1000.00/1000.00
108D	Brand of small size diffuser	500*500	420*420	380*380	1000.00/1000.00/1000.00
108H-002	Brand of small size diffuser	500*500	460*460	480*480	2000.00/1000.00
109F	Brand of small size diffuser	600*600	540*540	480*480	2000.00/1000.00

Applicable screw installation method, the measurement unit is millimeter, there is a slight error in manual measurement, please refer to the actual object

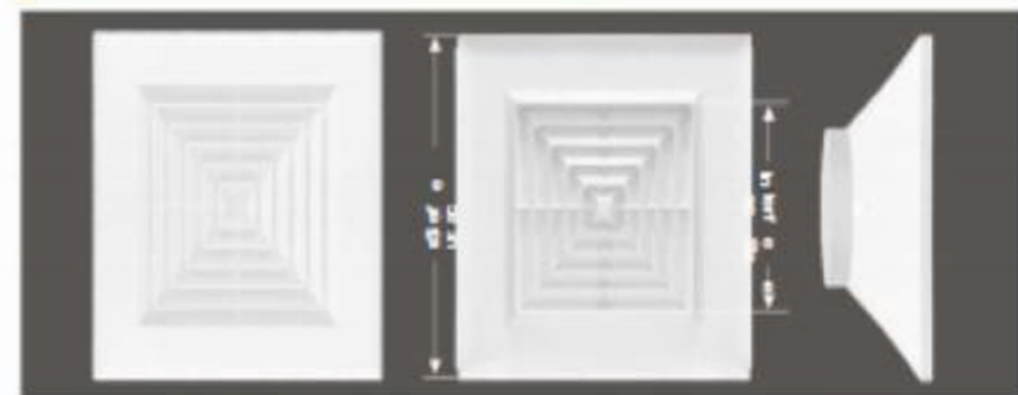
Double-layer lower adjustable air vent



Model	Double layer	Thick	Opening	Depth	Net weight (kg)
205V	240	300	200	30	10.0*100
206A	300	330	240	30	100*1000.00
206B	360	360	280	30	100*1000.00
206C	360	330	340	30	1000.00/1000.00

Subtle for installation on gypsum board, mineral wool board or integrated ceiling. The measurement unit is millimeter. There is a slight error in manual measurement. Please refer to the actual product.

Mineral wool diffuser outlet 595-600-603



Model	Name	Surface size	Spune height	Net weight (kg)
602H	Standard large size diffuser	600*600	300*300	1000.00/1000.00/1000.00
606H	Standard large size diffuser	600*600	300*300	1000.00/1000.00/1000.00
100F	Standard large size diffuser	600*600	300*300	1000.00/1000.00/1000.00

Subtle for installation on gypsum board, mineral wool board or integrated ceiling. The measurement unit is millimeter. There is a slight error in manual measurement. Please refer to the actual product.

HVAC VALVES

Brands



USA (Since 1936)



Concentric Butterfly Valve

High Performance Butterfly Valve

Eccentric Butterfly Valve

Gate Valve

Static Balance Valve

Automatic Control Valva

Check Valve

Air Release Valve

Ball Valve

AIR CONDITIONING PIPING SYSTEM



Introduction

Multilayer pipe is a new alternative applied to air conditioning systems. Multilayer pipe offers air conditioning performance equivalent to copper pipe, but at a low cost. In addition, it reduces installation time with its compression connection system that easily adapts to the air conditioning equipment.

Compared to traditional copper pipe, multilayer pipe is an innovative system that combines the advantages of

both plastic and metal pipes, offering ease of fold, tensile strength and extraordinary insulation capacity.

The PEX-AL-PEX multilayer pipe consists of 5 layers, an inner layer of cross-linked polyethylene (PE-X), an adhesive layer, an intermediate layer of aluminum, an adhesive layer and an outer layer of cross-linked polyethylene (PE-X).



- Easy to install
- Durable
- Barrier to the permeation of oxygen and light
- Multi-layer technology prevents natural corrosion and condensation problems
- Lower price than copper
- Light in weight
- Smooth inner wall ensures low pressure loss
- Less joints, reducing risk of leakage

Application

Designed for mini split air conditioning (cooling only).
Maximum Working Temperature: 60°C
Maximum Working Pressure: 552 PSI (38 bar)

Applicable refrigerant



Bending performance

Size(mm)	Bending Radius	
	Radius(mm)	
H-0712	60	
H-0912	60	
H-1216	80	
H-1620	100	
H-2025	125	

Standards

Compliance with the following codes:
2021, 2018, 2015, 2012, 2009 and 2006 International Mechanical Code®(IMC)
2021, 2018, 2015, 2012, 2009 and 2006 International Residential Code®(IRC)
2021, 2018, 2015, 2012, 2009 and 2006 Uniform Mechanical Code®(UMC)*

*Uniform Mechanical Code is a copyrighted publication of the International Association of Plumbing and Mechanical Officials.

Compliance with the following standards:
-ASTM F1281-2017(R2021), Standard Specification for Crosslinked Polyethylene/Aluminum/Crosslinked Polyethylene (PEX-AL-PEX) Pressure Pipe

-ICC-ES LC 1035-2015, Standard Specification for Cross-linked Polyethylene/Aluminum/Cross-linked Polyethylene (PEX-AL-PEX) Pipe and Fittings for Refrigeration Applications

Certificates





Compression Fitting

Advantages



Easy installation, no need for welding



Corrosion resistant



Removable and reusable



Safe and reliable



Long service life

Air conditioner		Copper pipe dimension		Valve joint	RIFENG multilayer AC system	
HP	BTU/h	Inch	mm	UNF thread	Pipe	Fittings
1/2, 3/4, & 1	4500~11000	1/4	6.35	7/16"-20UNF	H-0712	F1-S0912*7/16(20UNF) C
		3/8	9.52	5/8"-18UNF	H-0912	F1-S0912*5/8(18UNF) C
1/5 & 2	11000~20000	1/4	6.35	7/16"-20UNF	H-0712	F1-S0912*7/16(20UNF) C
		1/2	12.7	3/4"-16UNF	H-1216	F1-S1216*3/4(16UNF) C
2.5	20000~24000	1/4	6.35	7/16"-20UNF	H-0712	F1-S0912*7/16(20UNF) C
		5/8	15.88	7/8"-14UNF	H-1620	F1-S1620*7/8(14UNF) C
3-5	24000~36000	3/8	9.52	5/8"-18UNF	H-0912	F1-S0912*5/8(18UNF) C
		5/8	15.88	7/8"-14UNF	H-1620	F1-S1620*7/8(14UNF) C
6-8	36000~52000	3/8	9.52	5/8"-18UNF	H-0912	F1-S0912*5/8(18UNF) C
		3/4	19.05	11/16"-14UNF	H-1825 or H-2025	F1-S1825*1 1/16(14UNF) C or F1-S2025*1 1/16 (14UNF) C

Specification

PEX-AL-PEX (H Serie)



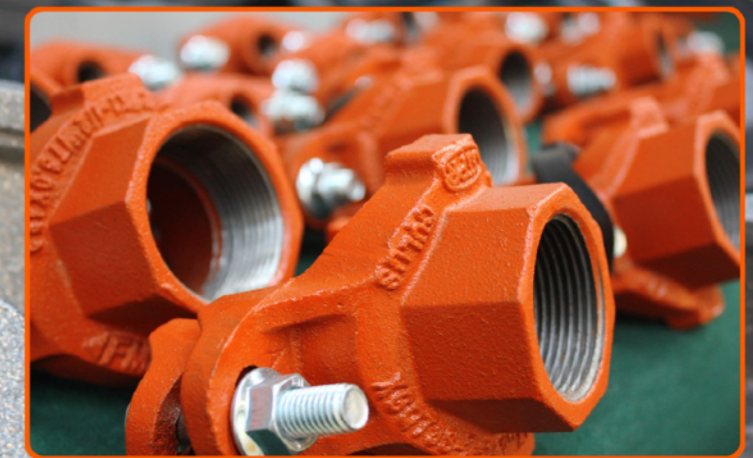
Spec.	Packing Spec. (m)	Color(out/in)
H-0712	50/100	Golden/Transparent or White/Transparent
H-0912	50/100	Golden/Transparent or White/Transparent
H-1216	50/100	Golden/Transparent or White/Transparent
H-1620	50/100	Golden/Transparent or White/Transparent
H-1825	50/100	Golden/Transparent or White/Transparent
H-2025	50/100	Golden/Transparent or White/Transparent
H-2632	50/100	Golden/Transparent or White/Transparent

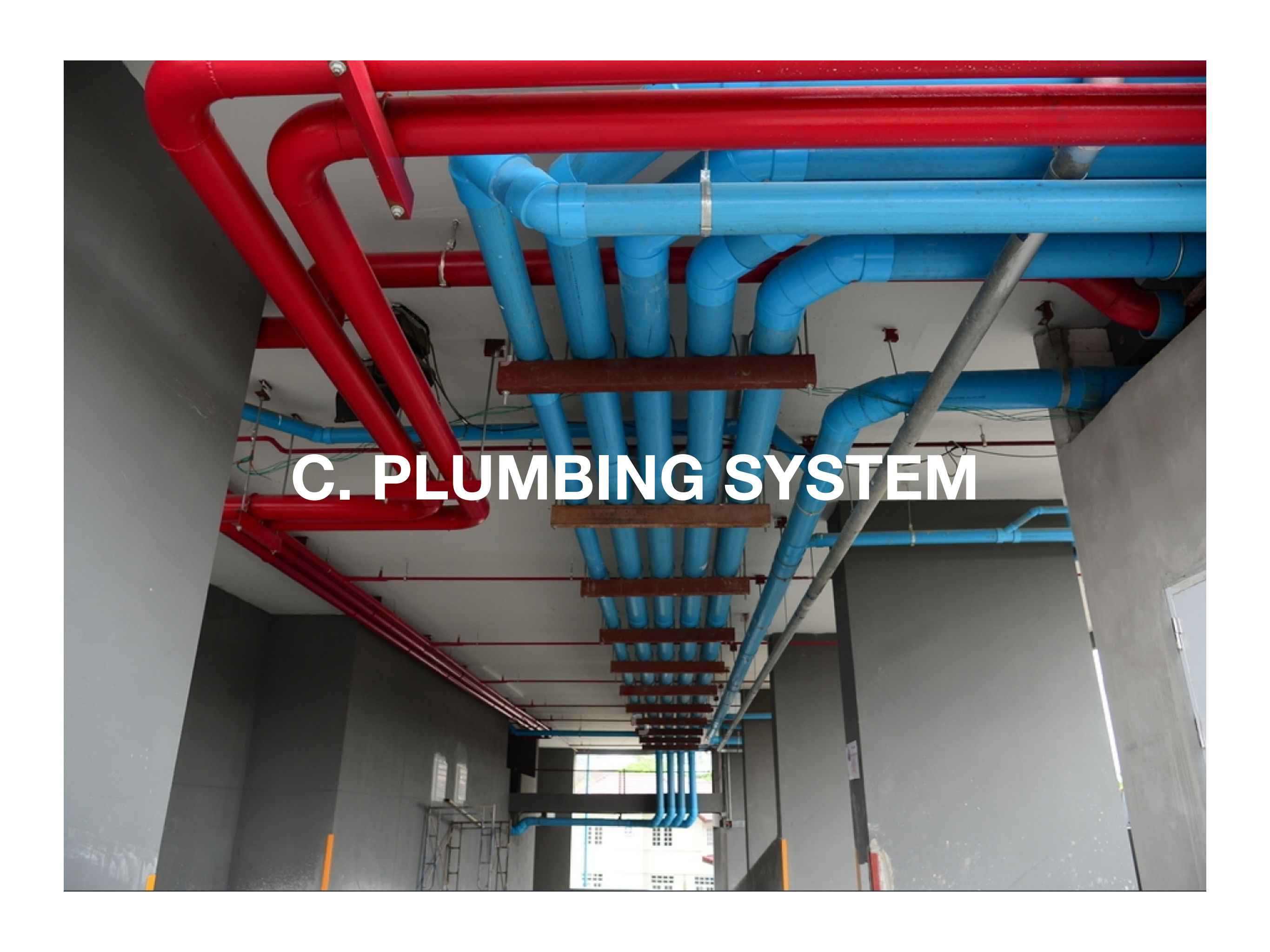
Insulated Air Conditioning Pair Coil

Pair coil	Pipe spec.	Coil thickness(mm)	Packing Spec. (m)
1/4"+3/8"	H- 0712+0912	10	25/30
1/4"+1/2"	H- 0712+1216	10	25/30
1/4"+5/8"	H- 0712+1620	10	25/30
3/8"+5/8"	H- 0912+1620	10	25/30
1/4"+3/8"	H- 0712+0912	8	25/30
1/4"+1/2"	H- 0712+1216	8	25/30
1/4"+5/8"	H- 0712+1620	8	25/30
3/8"+5/8"	H- 0912+1620	8	25/30
3/8"+3/4"	H- 0912+1825/2025	8	25/30

HVAC GROOVED & THREADED FITTINGS

Brands



A photograph of a complex plumbing system in a utility room. The system features a dense network of pipes, with red pipes running horizontally and blue pipes running vertically and horizontally. The pipes are supported by wooden brackets and metal hangers. The room has grey walls and a concrete floor. A window is visible in the background, and a door is on the right side. The text "C. PLUMBING SYSTEM" is overlaid in white, bold, sans-serif font in the center of the image.

C. PLUMBING SYSTEM

PLUMBING PUMPS

KSB
German
(Since 1886)

wilo
German
(Since 1872)

EVERGUSH
SINCE 1969
Taiwan
(Since 1969)



TRANSFER PUMPS



BOOSTER PUMPS



SUBMERSIBLE PUMP



PPR & PPR-CT PIPING SYSTEM

NXS
PHILIPPINES

PIPES, FITTINGS, VALVES &
ACCESSORIES



APPLICATION

- Hot & Cold Water
- Heating
- Potable Water
- Air Conditioning
- Industrial Pipeline System



HDPE PIPING SYSTEM

PIPES, FITTINGS, VALVES & ACCESSORIES

ISO STANDARD



- OVER 50 CERTIFICATIONS
- PROVIDED WITH 25 YEARS SYSTEM WARRANTY



PVC PIPING SYSTEM

NXS
PHILIPPINES

**PIPES, FITTINGS, VALVES &
ACCESSORIES**

ISO STANDARD

CE

Partner Manufacturer's Plant



PLUMBING VALVES & FITTINGS

Brands



USA
(Since 1936)

BRASS & STAINLESS STEEL



Ball Valves



Mini Ball Valves



Gate Valves



Float Valves



Stop Valves



Bib Cocks



PPR Valves



Air Vents



Y Strainers



Siphon



Swing Check Valves



Hose



Non-Return Valves



WC & WM Tap



Foot Valves



Fittings



Manifolds



Concentric Butterfly Valve



High Performance Butterfly Valve



Eccentric Butterfly Valve



Gate Valve



Static Balance Valve



Automatic Control Valve



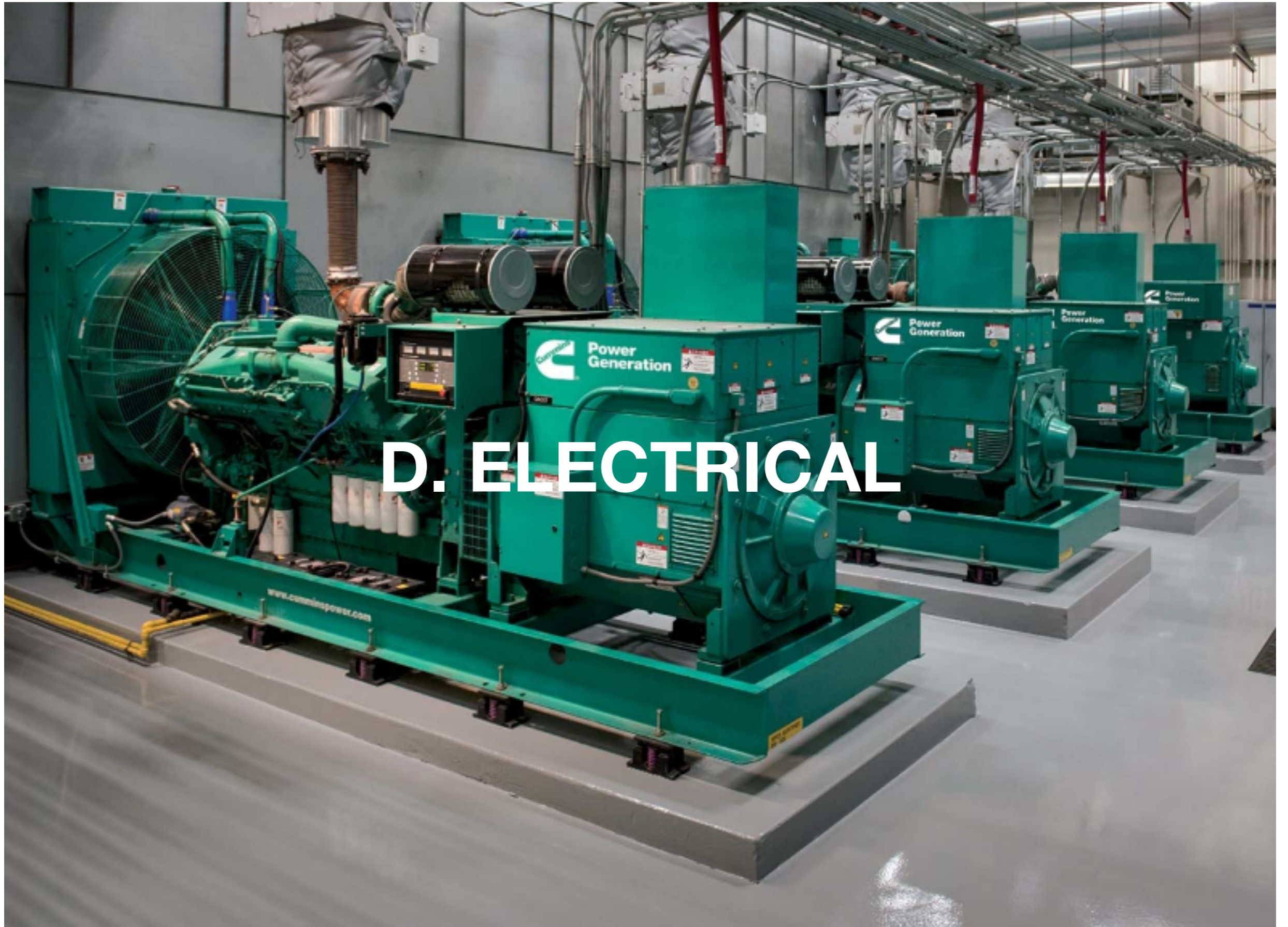
Check Valve



Air Release Valve



Ball Valve



D. ELECTRICAL

GENERATOR SETS



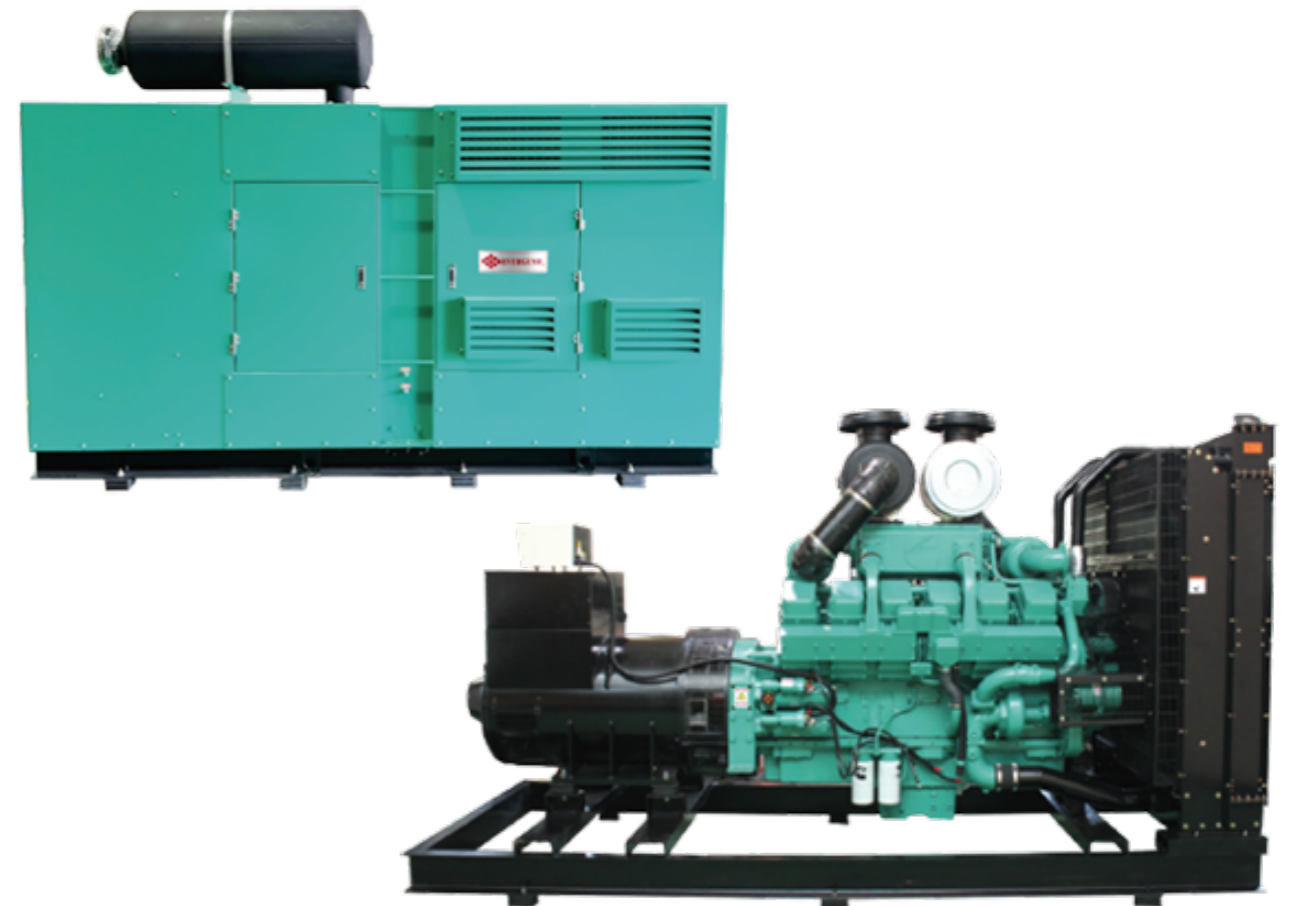
EVERGUSH
SINCE 1969

Taiwan
(Since 1969)



CUSTOMIZABLE ENGINE BRANDS

- **FPT - FIAT (Italy, China)**
- **CUMMINS (US, China)**
- **PERKINS (UK)**
- **MITSUBISHI**
- **MTU**
- **Or other engine of your choice**



VARIABLE FREQUENCY DRIVERS (VFD)

ENERGY SAVING INVERTER

Brand

 **Fuji Electric**
Innovating Energy Technology

APPLICATION

- HVAC
- WATER PUMP
- FANS



HIGH QUALITY POWER



Experts in Power Conversion

Taiwan (1994)

UNINTERRUPTIBLE POWER SUPPLY (UPS)



HARMONICS FILTER



BATTERY MONITORING SYSTEM



APPLICATION



Small/medium datacenter



Medical equipment



Critical loads



Industry